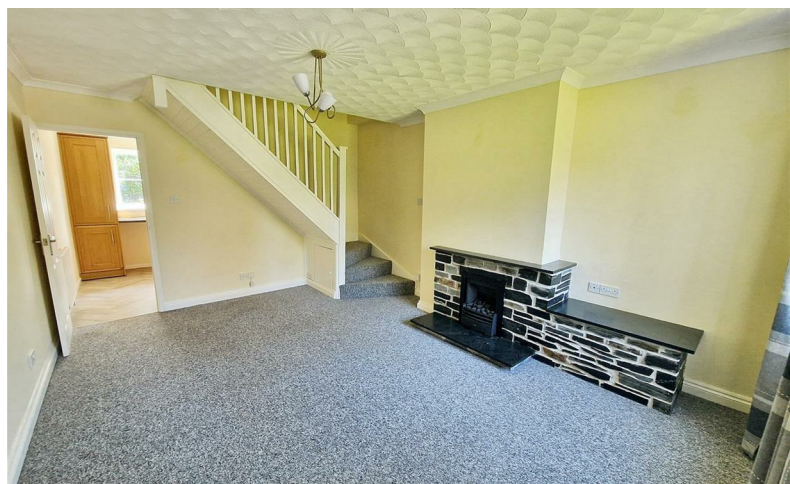


# *Philip Martin*

LETTINGS LIMITED



EVEA CLOSE, TRURO

£1,200 PCM

[www.philip-martin.co.uk](http://www.philip-martin.co.uk)



## 21 EVEA CLOSE, TRURO, CORNWALL, TR1 3XA

A semi detached house situated on the edge of Truro and briefly the accommodation comprises; porch, lounge, kitchen/dining room, 2 bedrooms and bathroom. Outside there are gardens to the front and rear as well as a garage and driveway. Pets Considered.

- Gas Fired Central Heating
- Pets Considered
- Available End of July
- Council Tax Band C
- Front and Rear Gardens
- Double Glazed Windows
- Garage and Parking
- Deposit £1384
- EPC C
- Initial Fixed Term of 6 Months

### LOUNGE

### KITCHEN/DINING ROOM

### BEDROOM 1

### BEDROOM 2

### BATHROOM

### CREDIT REFERENCES AND DEPOSIT

Prospective tenants will be required to complete an application form and if successful will have to pay a holding deposit equivalent to 1 weeks rent. At that stage we will carry out a credit reference and only once the referencing is successfully completed will the property be formally offered. Prior to occupation the balance of the first months rent and a deposit equivalent to 5 weeks rent will be payable.

### DIRECTIONS

From Truro, head towards Threemilestone on the A390. Turn left by the newsagents onto Newbridge Lane, take the 3rd right onto Newbridge Lane again, then the first left into Carrine Road where Eeva close will be found on the right hand side.

#### CONTACT US

6 Cathedral Lane  
Truro  
Cornwall  
TR1 2QS

01872 272716

lettings@philip-martin.co.uk

